



Gas & Oil Pipeline Projects

Desalinated Water Supply
Projects

Large Diameter Pipes
Transport

SB-60R

PIPELAYER

Extra

Specification

FINAL DRIVES

Double-reduction with planetary final drive stage provides desired gear reduction at the sprocket. Sprocket distributes wear evenly over track bushings letting every tooth ride free one-half of the time to reduce wear. Final drives or sprockets are replaceable without removing track frames.

TRACK FRAME

Non-oscillating type, all-welded heavy box section track frame
 Track rollers, each side..... 8
 Top idlers, each side 2
 Front idlers (drum type) each side 1
 All rollers and idlers..... Lifespan lubricated

TRACKS

The split master link reduces chain removal and installation time.

Track shoe width, standard	762 mm (30")
Track shoes, each side	41
Ground contact area	5.36 m ² (8308 in ²)
Ground pressure	93.2 kPa (13.5 psi)
Height of grouser	76 mm (3")
Track adjustment	full hydraulic
Ground clearance	500 mm (19.6")

REFILL CAPACITIES

	Liter	(US gal)
Fuel tank	640	(168.5)
Cooling system	46	(12.0)
Crankcase w/filter	40	(10.6)
Transmission system	240	(63.4)
Final drive, each side.....	95	(25.0)
Hydraulic reservoir	195	(51.5)
Diesel Exhaust Fluid (DEF) tank	38	(10)

OVERALL DIMENSIONS WITH EQUIPMENT

Width, w/o counterweights and boom	3.60 m (11'10")
Width, counterweights extended	5.49 m (18')
Overall length	5.46 m (17'11")
Height w/o boom	3.91 m (12'10")
Track on ground.....	3.52 m (11'7")

OPERATING WEIGHT

Includes standard equipment
 and full fuel..... 50935 kg (112,293 lb)

ENGINE

* Make and Model CUMMINS QSG12
 Type In-line, 6-cylinder
 Aspiration Turbocharged and CAC
 Gross Horsepower, SAE J1995 283 kW (355 hp)
 ** Net Horsepower, SAE J1349/ISO 9249 255 kW (342 hp)
 Rated rpm 2000 rpm
 Maximum torque @ 1400 rpm 1862 Nm (1,350 lb ft)
 Displacement 11.8 l (720 in³)
 Air Cleaner dry type with exhaust aspirated
 primary and safety elements and service indicator

* Meets EU Stage IV and US EPA Tier 4 Final emission regulations on diesel engines used in off-road applications. The engine requires to use:

- Ultra Low Sulfur Diesel (ULSD)
- Diesel Exhaust Fluid (DEF) per ISO 22241

** Net Horsepower at the minimum speed of hydraulic fan 277 kW (370 hp)

TRANSMISSION & TORQUE CONVERTER

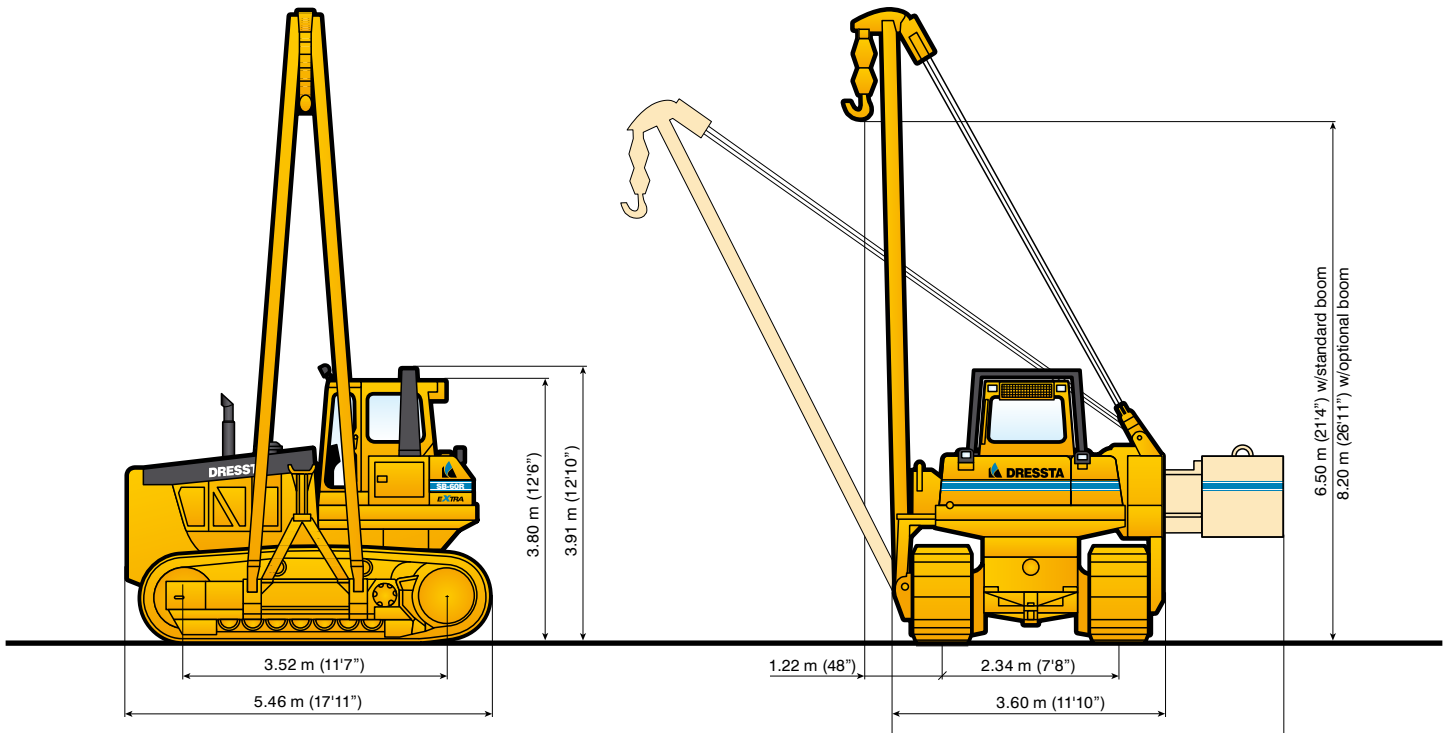
Modular, countershaft type power shift, electro-hydraulic control.
 Single stage 409 mm (16") torque converter with a 2.7:1 stall ratio drives to transmission through a double universal joint.

TRAVEL SPEEDS

Gear	Range	Forward	Reverse
1	low	2.8 (1.7) km (mph)	3.4 (2.1) km (mph)
	high	3.7 (2.3) km (mph)	4.5 (2.8) km (mph)
2	low	4.8 (3.0) km (mph)	5.9 (3.7) km (mph)
	high	6.3 (3.9) km (mph)	7.6 (4.7) km (mph)
3	low	7.8 (4.8) km (mph)	9.4 (5.8) km (mph)
	high	10.1 (6.3) km (mph)	12.2 (7.6) km (mph)

STEERING & BRAKING

Two speed geared steering module provides gradual turns while maintaining full power to both tracks plus conventional clutch-brake performance for tight or pivot turns. This type of steering system offers superior traction in all types of operations and terrain.
 Coupled to 3-speed transmission provides 6 speeds forward and 6 reverse. The left hand joystick controls transmission and steering drive for up and down shifting, steering, Hi/Lo selection and LH/RH gradual geared turn. Foot pedal applies both brakes for parking and downhill control. Brakes are spring applied and hydraulically released.



PIPELAYING EQUIPMENT

COUNTERWEIGHTS

Adjustable, hydraulically controlled:

Counterweight frames	2 280 kg (5,026 lb)
4 blocks at 2340 kg (5,159 lb) each	9 360 kg (20,635 lb)
Total weight extendable	11 640 kg (25,660 lb)

LIVE POWER

Continuous power to pipelayer winches, independent of torque converter.

WINCH TRANSMISSION

Planetary gear box, 2 speeds for raising, 2 for lowering.

DRUMS

Operated independently or simultaneously.

	HOOK	BOOM
Drum diameter	359 mm (14.1")	359 mm (14.1")
Max capacity with 19 mm (3/4") cable	92 m (301'10")	78 m (255'11")

HOOK SPEEDS (bare drum)

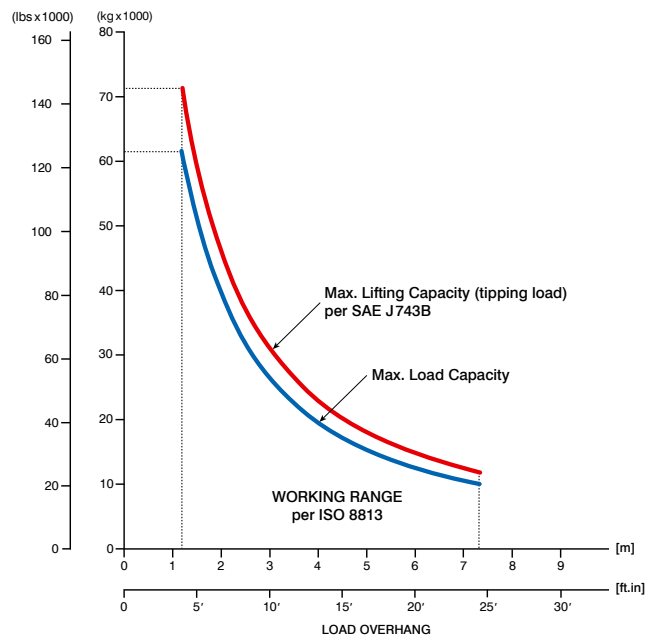
Raise/Lower	m/min	(ft/min)
- Low	10.5/10.2	(34.4/33.5)
- High	19.8/19.4	(65.0/63.6)

BOOM

Welded box section. Length of standard boom – 7.315 m (24') and optional boom – 9.0 m (29'6").

LIFTING CAPACITY

for standard 7.315 m (24") boom



SPECIFIED EQUIPMENT

- 19 mm (3/4") WIRE ROPE, 26300 kg (57,981 lb) MINIMUM BREAKING STRENGTH
- 4 PART LOAD LINE
- 3 PART BOOM LINE
- COUNTERWEIGHTS EXTENDED – 11640 kg (25,660 lb)

STANDARD EQUIPMENT

- Air cleaner, dry type w/exhaust aspirated primary and safety elements and service indicator
- Alarm back-up
- Alternator, 50 A
- Antifreeze, -37°C (-34°F)
- Batteries, (4) 12 V, 1920 CCA, maintenance free
- Boom kickout, uppermost position
- Boom welded type, box-section structure, "A" shape frame, length 7315 mm (24')
- Brakes, wet multiple disc, closed type, spring applied, hydraulically released
- Brake, hook lowering, auxiliary
- Bumper, front
- Cab with sound suppression, air recirculation system, Lights: 2F and 1 side (LH), 4 wipers w/washers, inside mirror, dome light, roof window and emergency hatch (approved according to FOPS – SAE J231)
- Coolant filter conditioner
- Cooling module; includes radiator, transmission oil cooler, hydraulic oil cooler, charge air cooler; isolation mounted
- Counterweights, adjustable, hydraulically controlled 4 blocks and 2 counterweight frames
- Decelerator – right foot pedal and brake – center foot pedal
- Diagnostic center for power train pressures
- Drawbar, fixed
- Ecological drains for engine oil, radiator coolant and hydraulic oil
- Emergency hook lowering system
- Engine side doors, perforated type, hinged
- Engine hood, solid, sloped
- Exhaust pipe extension
- Fan, hydraulically controlled
- Filters, oil, spin-on type
- Filters, drive train system, hydraulic system, fuel system
- Final drive seal guard
- Guards: crankcase – hinged with front pull hook, fan, transmission
- Horn, electric
- Instruments:
 - Gauges: fuel level, engine coolant temp., engine oil pressure, torque converter oil temp., voltmeter, hourmeter, brake lock, emergency hook lowering, joystick control display
 - Warning lights: air cleaner filter, transmission oil filter, hydraulic oil filter, transmission/clutch oil low pressure, counterweights extended, hook top limit position, boom top limit position
 - Audible & visual warning system: low engine coolant level, low engine oil pressure, coolant high temperature, hydraulic oil high temperature
- Light, boom
- Lights w/guards, 2F–2R, tractor mounted
- Load capacity indicator, mechanical, on boom frame
- Muffler, under engine hood, insulated
- Radiator guard doors, louvered, two-piece, hinged
- Rear access platform
- Receptacle, starting/charging
- Seat belt (SAE J386) – 3" wide, retractable
- Seat, deluxe, air suspension type, fabric cover, adjustable with arm rests
- Starting aid – air grid heater
- Starting, 24 V
- Steering, planetary type, 2 speed, left hand single lever control (joystick)
- Strainers, fuel and hydraulic tanks
- Tools compartment
- Torque converter, single stage
- Track adjusters, hydraulic
- Track chain guides, integral
- Track chain sealed and lubricated (LTS) with split master link, 41 links
- Track frames, 8 roller, 2340 mm (92") gauge, non-oscillating type, lifespan lubricated rollers and idlers
- Track shoes 762 mm (30")
- Transmission, power shift, 3 speeds forward, 3 reverse combined with 2 speed steering provides, 6 speeds forward, 6 reverse
- Water separator, fuel system
- Winch transmission (two separate winches for hook and boom with hydrostatic drive system and planetary transmission)

OPTIONAL ATTACHMENTS

- Air conditioner/heater/pressurizer/defroster
- AM/FM CD radio
- Heater/pressurizer/defroster
- Lights 2R, cab mounted
- Light, winch, cab mounted (RH)
- Mirrors, 2 pcs. exterior
- ROPS, 2 post (SAE J1040), for standard Cab. Must be ordered to meet CE requirement
- Starting/charging receptacle plug assembly with cable
- Tools in metal box
- Track roller guards
- Track shoes 860 mm (34")
- Vandalism protection
- Working attachments:
 - boom, welded type, box-section structure, "A" shape frame, length 9000 mm (29'6")
 - boom, length 7315 mm (24'), for use with load limit indicator
 - boom, length 9000 mm (29'6"), for use with load limit indicator
 - load limit indicator
 - hook pulley block limit switch, uppermost position
 - load capacity indicator, mechanical, for 9000 mm (29'6") boom
 - rubber protection strips, bolted, for use with 7315 mm (24') boom
 - rubber protection strips, bolted, for use with 9000 mm (29'6") boom

Specifications may change from time to time and this brochure may not reflect the latest specifications. Photographs in this brochure may not reflect market configuration. Please consult your dealer to confirm specifications and configurations.



Dressta encourages safe worksites. Please consult operator's manual before use of any Dressta equipment.



info@dressta.com
www.dressta.com

DR-PB-PIP-SB60R-0516-ENG